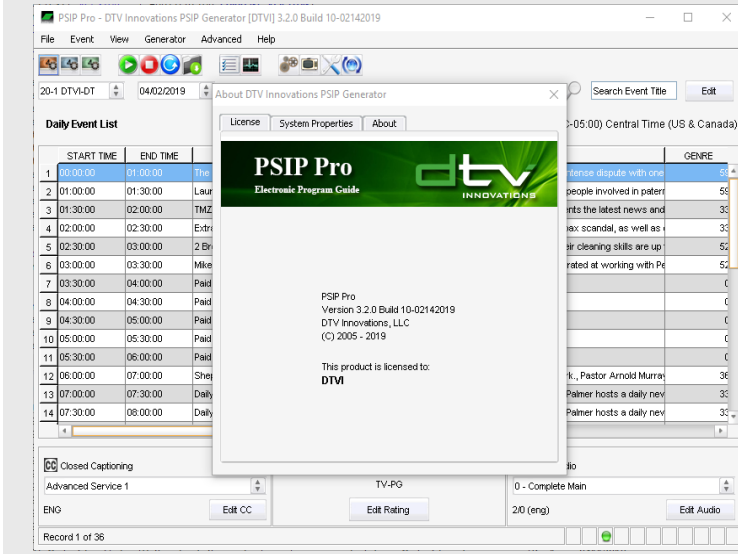




PSIP Pro

Dynamic Electronic Program Guide Software



- Industry leading PSIP product adopted by U.S. broadcasters
- Meets All ATSC Standards, Recommended Practices, as well as FCC mandates, reports, and orders
- Seamless integration with major brand Encoders and Multiplexers
- Robust interface with program management including listing services, traffic & automation systems
- Reliable, intuitive, complete, and cost-effective System
- Supports flexible configuration for various redundancy configurations

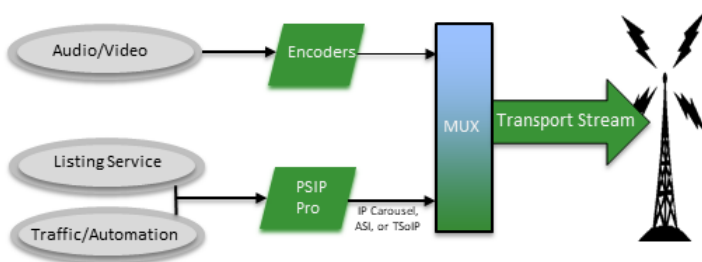
A COMPLETE PSIP SOLUTION

DTV Innovations' **PSIP Pro** is an accurate, easy to use, feature-rich software solution. It offers advanced capabilities and a user-friendly graphic interface at a cost effective, entry-level price. It meets all FCC requirements, and supports ATSC Recommended Practices. **PSIP Pro** is the system of choice by networks, television station engineers, and system integrators. It is a stable, reliable system at an affordable price.

PSIP Pro provides a comprehensive list of interfaces to most major brand MPEG-2 encoders and multiplexers, including proprietary carousel mechanisms and generic DVB-ASI and TSoIP streams.

DTVi's **PSIP Pro** has an easy-to-use software GUI that allows generation, editing, navigation and searching of program schedules. It includes advanced EPG management functionality such as recurring events, default events, search event gaps, search event overlap and event over-run control. **PSIP Pro** was designed as a robust system while minimizing user input time in setup and administration.

PSIP Pro is built on modular design, so it can be configured to provide a variety of redundancy options.



VISION + INNOVATION



PSIP Pro

Dynamic Electronic Program Guide Software

Base Features	EPG Management
Full Dynamic PSIP Generator. Meets FCC Standards, Report & Orders and ATSC Standards and Recommended Practice.	Manual Event Editing & Scheduled EPG Imports from Traffic and Listing Services such as Gracenote or TitanTV
Generates all required PSIP Tables: PAT, PMT, MGT, TVCT/CVCT, STT, RRT, EITs, ETTs	Multiple Source Ingest with Merge
Bandwidth Utilization as low as 50 kbps up to amount needed for additional virtual channels or extended time range	Event Overrun/Gap Management, Recurring and Default Background Event
Supports both Terrestrial and Cable PSIP applications	EPG Export
Special Features	Service Information
Output Data Stream Monitoring & Streaming Control for ASI and TSoIP outputs	Unlimited Virtual Channel & Services per Channel (option)
Multiple Language Support	Closed Caption, AC-3 Audio, and Content Advisory Descriptors
Automatic Restart upon System Reboot	Redistribution Control and Genre support
Instant Notification via Email and Cell Phone Text Messaging (option)	Provides 12 hrs (ATSC minimum) up to 16 days (ATSC maximum) of EPG data (EIT & ETT).
I/O	Up Front Cost Savings
Data Carouseling: Imagine Systems, Harmonic Systems, Logic Innovations, Ericsson, ATEME, Evertz, Nevion, and more	Operating System: Windows 7/10, Windows Server 2012/2016, or Ubuntu 16.04/18.04
IP Synchronization with Encoder or Multiplexer	Intel i5 core, 2.8 GHz or higher processor 2 GB RAM (4 GB is recommended)
UDP/IP or ASI Transport Stream Output to Encoder or Multiplexer	PCIe Extension Slot (ASI/310 option)
Real Time Synchronization with Automation and Program Management Systems	100/1000 Base-T Ethernet Interface
Key Advantages	Ongoing Cost Savings
ATSC A/76 Program Metadata Communication Protocol (PMCP) import/export of EPG data	No Listing Service up charge
Two Input Mux with PSIP Insertion utilizing the BX01-1300 PCIe Multiplexer Card with ASI and 310 outputs (option)	No Annual License file required
PSIP Redundancy – Supports full Redundant PSIP System	Hardware purchase is optional – Station can supply

VISION + INNOVATION