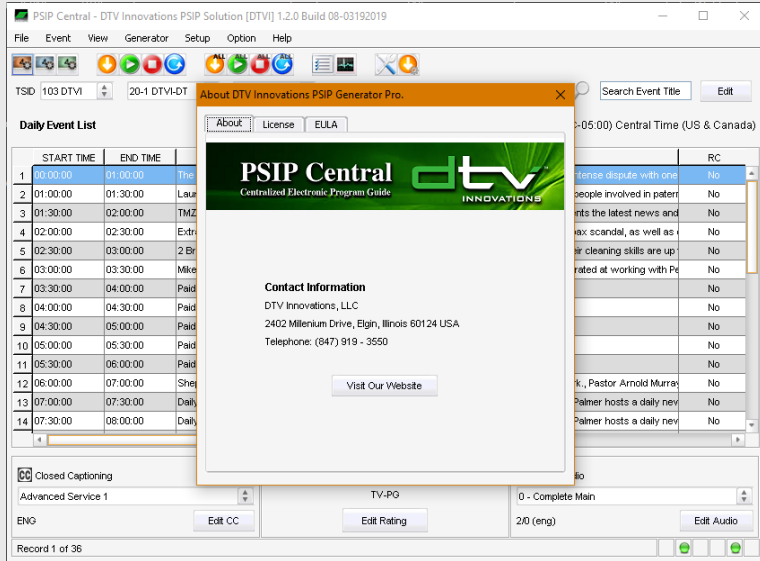




PSIP Central

Electronic Program Guide Software for Multiple Transport Streams



Full featured dynamic PSIP solution designed for single or multiple stations

Meets All ATSC Standards, Recommended Practices, as well as FCC mandates, reports, and orders

Seamless integration with major brand Encoders and Multiplexers

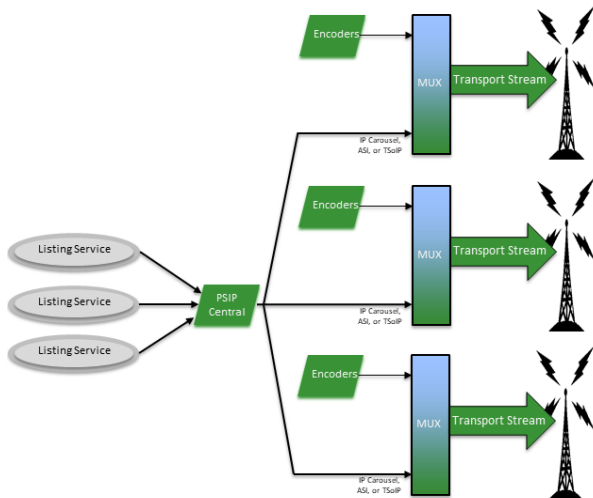
Robust interface with program management including listing services, traffic & automation systems

Reliable, intuitive, complete, and cost-effective System

Supports flexible configuration for various redundancy configurations

A CENTRALIZED PSIP SOLUTION

DTV Innovations' **PSIP Central** is a centralized PSIP generator providing networks, station group owners and cable head ends with the ability to generate and manage PSIP data (electronic program guide) from a centralized location and deliver it to affiliate stations. It meets all FCC requirements, and supports ATSC Recommended Practices.



PSIP Central is a true Central Cast system with multiple outputs enabling either a single station or multiple stations to have different Virtual Channel Tables (VCT) and Transport Stream ID's (TSID) on discrete outputs. It supports a comprehensive list of interfaces to most major brand MPEG-2 encoders and multiplexers, including proprietary carousel mechanisms and generic DVB-ASI and TSoIP streams.

DTV's **PSIP Central** has an easy-to-use software GUI that allows generation, editing, navigation and searching of program schedules. It includes advanced EPG management functionality such as recurring events, default events, search event gaps, search event overlap and event over-run control. **PSIP Central** is designed as a robust system while minimizing user input time in setup and administration.

PSIP Central is built on modular design, so it can be configured to provide a variety of redundancy options.

VISION + INNOVATION



PSIP Central

Electronic Program Guide Software for Multiple Transport Streams

Base Features	EPG Management
Full Dynamic PSIP Generator. Meets FCC Standards, Report & Orders and ATSC Standards and Recommended Practice.	Manual Event Editing & Scheduled EPG Imports from Traffic and Listing Services such as Gracenote or TitanTV
Generates all required PSIP Tables: PAT, PMT, MGT, TVCT/CVCT, STT, RRT, EITs, ETTs	Multiple Source Ingest with Merge
Can set up multiple transports streams to support multiple stations, redundant paths, or differentiated terrestrial/cable feeds. Also useful in multi-QAM channel Cable applications.	Event Overrun/Gap Management, Recurring and Default Background Event
Supports both Terrestrial and Cable PSIP applications	EPG Export
Special Features	Service Information
Output Data Stream Monitoring & Streaming Control for ASI and TSoIP outputs	Unlimited Virtual Channel & Services per Channel (option)
Multiple Language Support	Closed Caption, AC-3 Audio, and Content Advisory Descriptors
Automatic Restart upon System Reboot	Redistribution Control and Genre support
Supports multiple timezones	Provides 12 hrs (ATSC minimum) up to 16 days (ATSC maximum) of EPG data (EIT & ETT).
I/O	Up Front Cost Savings
Data Carouseling: Imagine Systems, Harmonic Systems, Logic Innovations, Ericsson, ATEME, Evertz, Nevion, and more	Operating System: Windows 7/10, Windows Server 2012/2016, or Ubuntu 16.04/18.04
IP Synchronization with Encoder or Multiplexer	Scalable processor support based on needs of customer
UDP/IP or ASI Transport Stream Output to Encoder or Multiplexer	Upgrade path from PSIP Pro
Real Time Synchronization with Automation and Program Management Systems	100/1000 Base-T Ethernet Interface
Key Advantages	Ongoing Cost Savings
ATSC A/76 Program Metadata Communication Protocol (PMCP) import/export of EPG data	No Listing Service up charge
Allows easier management of multiple streams	No Annual License file required
PSIP Redundancy – Supports full Redundant PSIP System	Hardware purchase is optional – Station can supply

VISION + INNOVATION